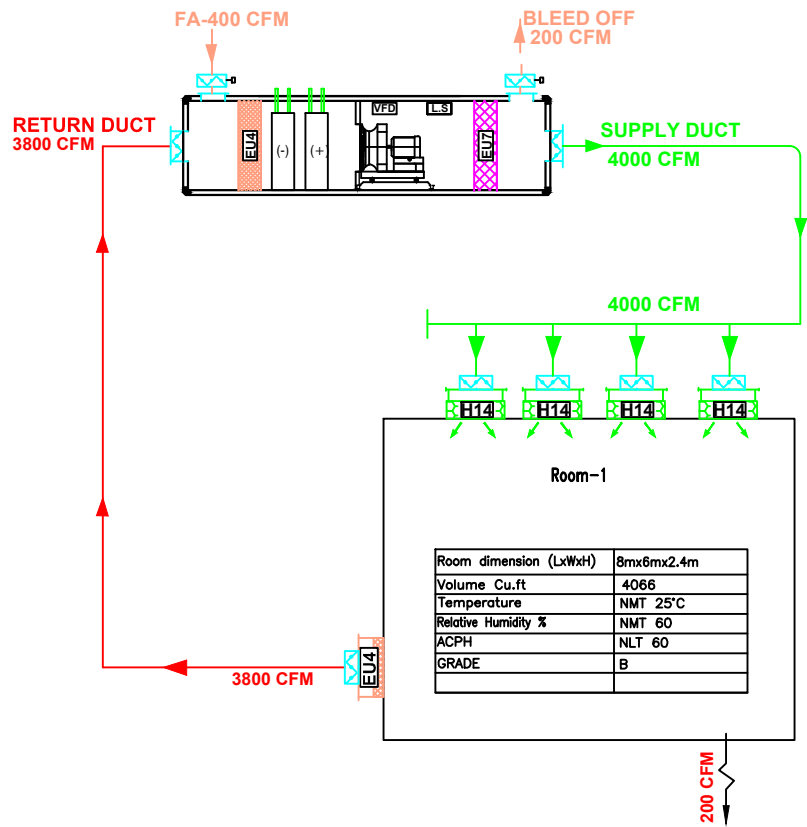


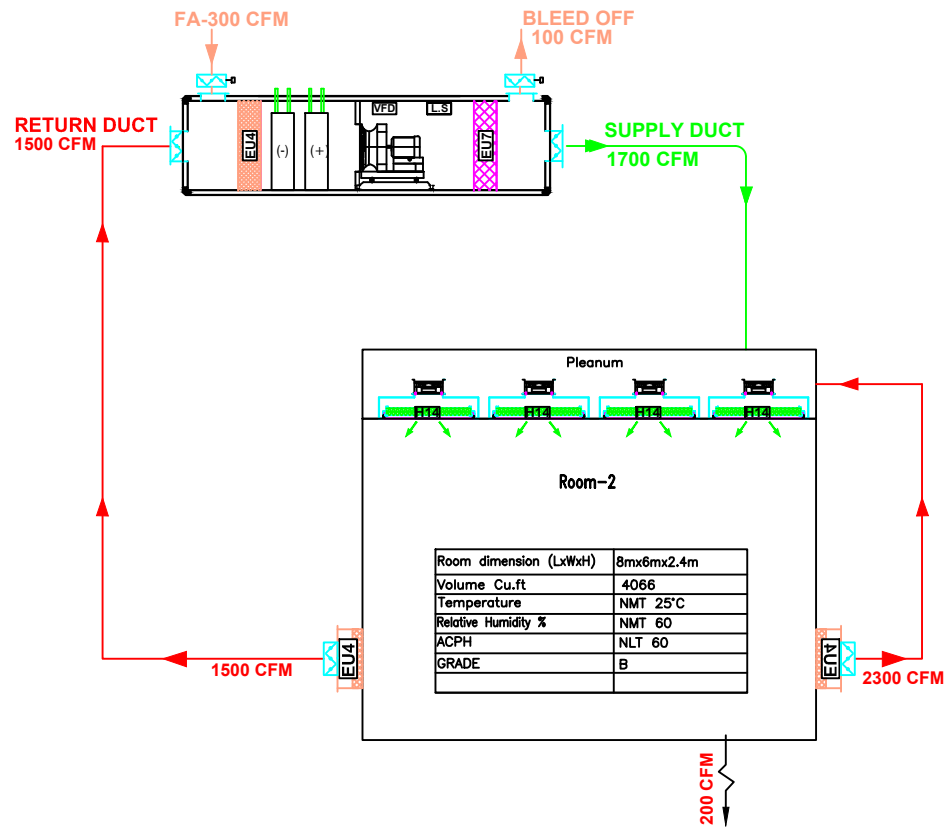
TRADITIONAL AHU



AHU CAPACITY EQUAL TO AIRFLOW REQUIRED BASED ON ACPH


Power required: 5.5 Kw

SUGGESTED AHU



AHU CAPACITY EQUAL TO OFFSET SENSIBLE/LATENT HEAT
KEEPING ACPH SAME AS TRADITIONAL

Power required: 2.2 Kw

CLIENT: SUGGESTIVE DRAWING					
PROJECT:					
 PR PHARMA ENGINEERS PVT. LTD. Plot No. 113/A/1, lane No.8, Phase-2 IDA,Cherlapally TEL-040-2726113, FAX-040-27261114					
TITLE: COMPARISON BETWEEN TRADITIONAL AHU Vs SUGGESTED AHU					Drg. No. PE/RF/03
DRN BY	CHK BY	APPD BY	DATE	SCALE	REV.
YVK		PR	05.04.24	NTS	RO