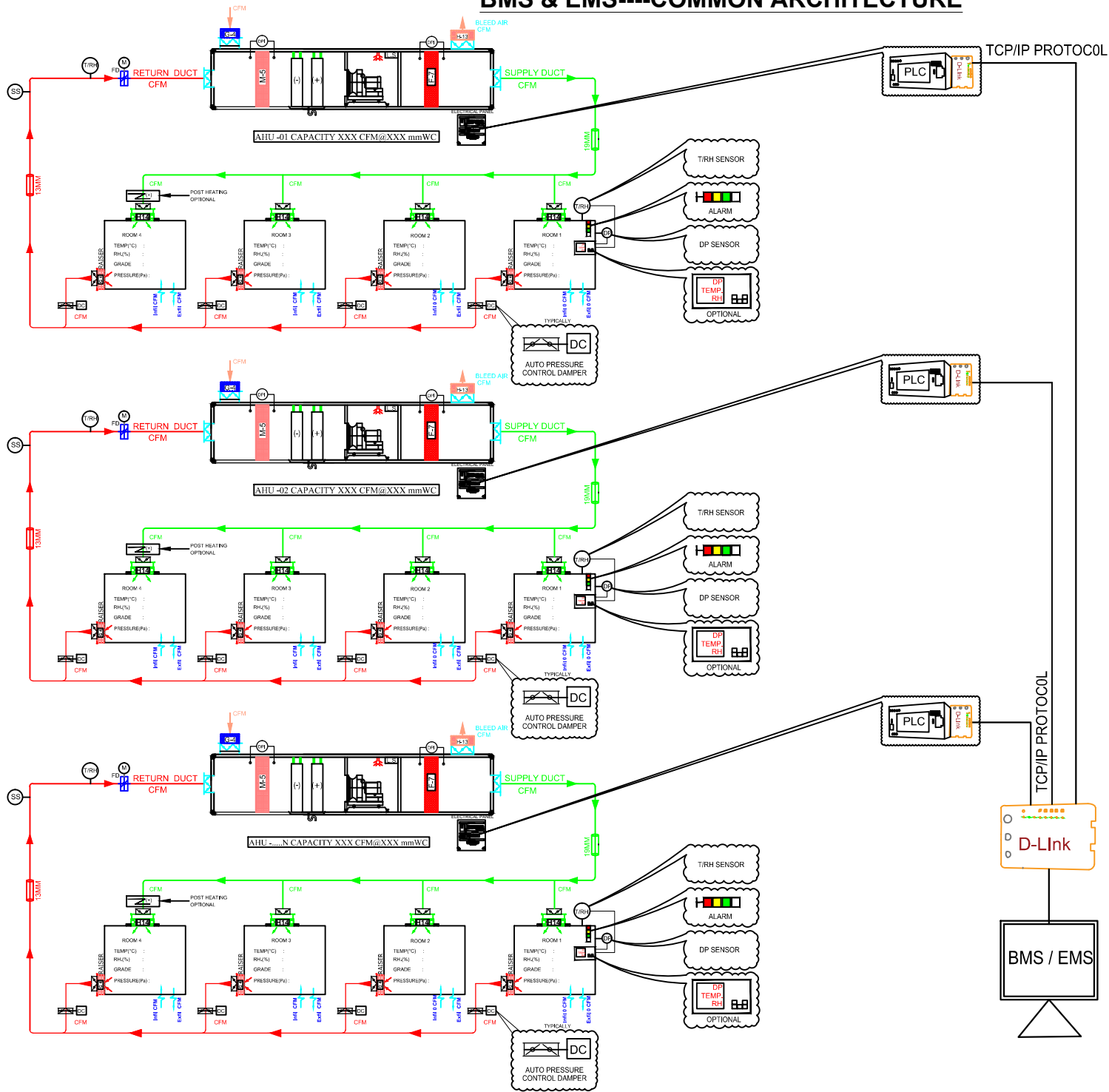


# BMS & EMS---COMMON ARCHITECTURE



## SET POINTS FOR AHU PLC:-

1. ON/OFF FROM HMI/SCADA
2. FREQUENCY / CFM
3. TEMPERATURE/RH
4. ABSOLUTE PRESSURE OF ROOM

## COMM. FROM AHU PLC:-

1. AIRFLOW
2. RETURN AIR TEMPERATURE/RH
3. ABSOLUTE PRESSURE OF ROOM
4. CHILLED/HOT WATER, WATER IN/OUT TEMP.
5. COOLING LOAD/HEATING LOAD
6. STATIC PRESSURE/EFFICIENCY

## ABOUT ROOM :-

1. ROOM TEMPERATURE/RH
2. ROOM DP
3. ROOM ALARMS

CLIENT: SUGGESTIVE DRAWING

PROJECT:

**PR PHARMA ENGINEERS PVT. LTD.**  
 Plot No. 113/A/1, lane No.8, Phase-2 IDA,Cherlapally  
 TEL-040-2726113, FAX-040-27261114

**TITLE: BMS&EMS COMMON ARCHITECTURE**

Drg. No.  
PE/RF/02/2

DRN BY	CHK BY	APPD BY	DATE	SCALE	REV.
YVK		PR	05.04.24	NTS	RO