

BMS & EMS-----INDIVIDUAL ARCHITECTURE

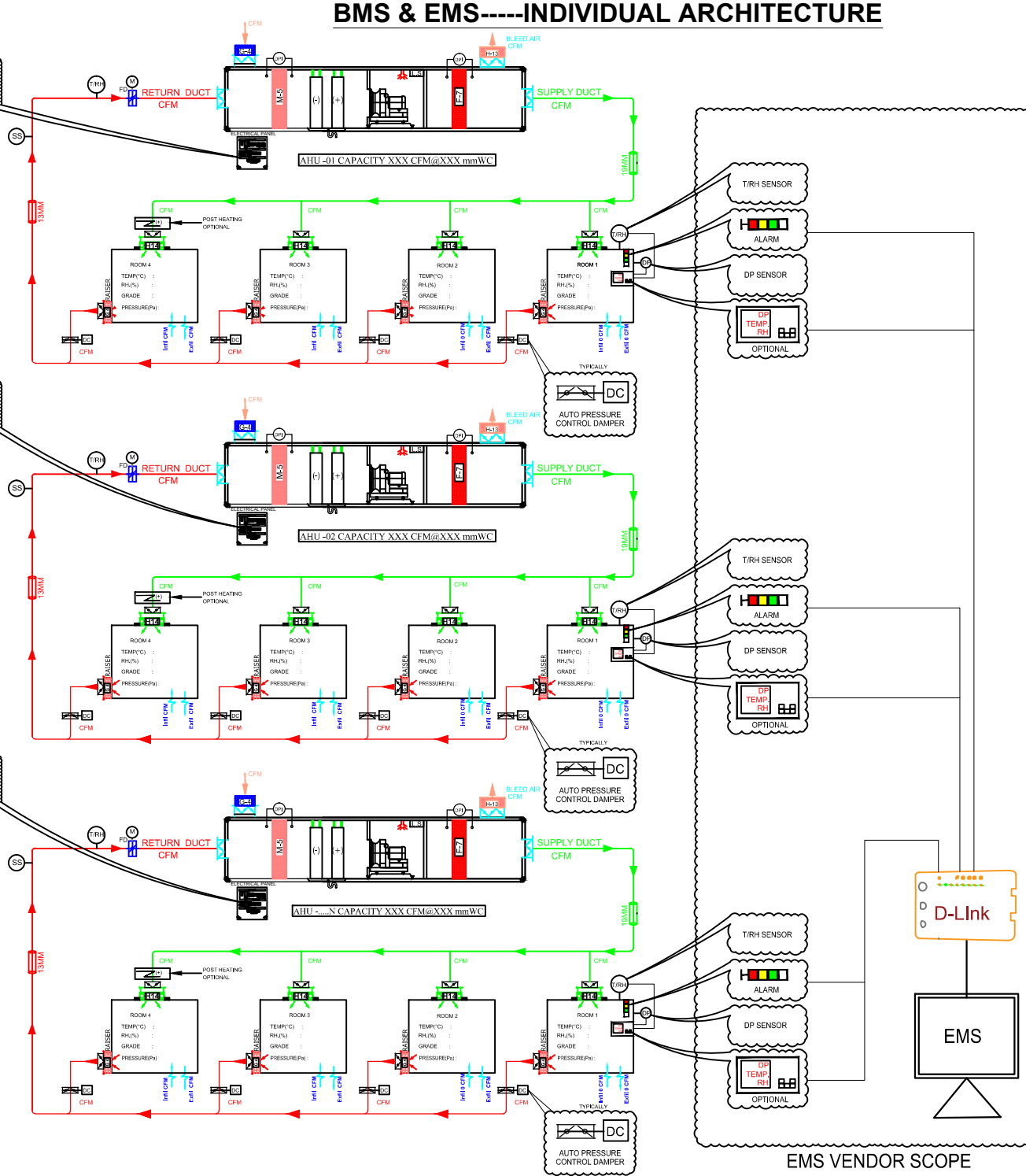
TCP/IP PROTOCOL

TCP/IP PROTOCOL
TCP/IP PROTOCOL

D-Link

BMS

BMS VENDOR SCOPE



SET POINTS FOR AHU PLC:-

1. ON/OFF FROM HMI/SCADA
2. FREQUENCY / CFM
3. TEMPERATURE/RH
4. ABSOLUTE PRESSURE OF ROOM

COMM. FROM AHU PLC:-

1. AIRFLOW
2. RETURN AIR TEMPERATURE/RH
3. ABSOLUTE PRESSURE OF ROOM
4. CHILLED/HOT WATER, WATER IN/OUT TEMP.
5. COOLING LOAD/HEATING LOAD
6. STATIC PRESSURE/EFFICIENCY

CLIENT: SUGGESTIVE DRAWING

PROJECT:

PR PHARMA ENGINEERS PVT. LTD.

Plot No. 113/A/1, lane No.8, Phase-2 IDA,Cherlapally
TEL-040-2726113, FAX-040-2726114

TITLE: BMS&EMS INDIVIDUAL ARCHITECTURE

Dr. No.
PE/RF/02/1

DRN BY	CHK BY	APPD BY	DATE	SCALE	REV.
YVK		PR	05.04.24	NTS	RO